

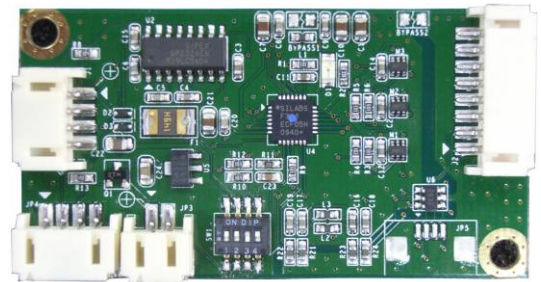
PenMount 6200C Control Board Data Sheet

RoHS compliance

Features:

PenMount 6200C Control Board integrated features and functions for 4, 5 & 8 wire resistive touch screens; both USB and RS-232 interface with auto-detection; complemented by the superbly developed PenMount drivers with auto installation driver capability.

PenMount 6200C Control Board using PenMount 6000 controller that has been designed for those who may like and all-in-one solution with A/D converter built-in to make the total printed circuit board denser. There are five connectors on this board. J1 connects to USB. J2 is for 4-, 5- and 8-wire touch screen via extension cable. JP3 supplied the power for RS232 interface. JP4 connects to RS232 interface. JP6 connects to 4-wire FPC connector touch screen (pitch 1.0mm ZIF tail).



Specifications:

| | | |
|--------------------------------|---|--|
| Touch Screen | For 4-, 5-, 8-wire analog resistive type | |
| Interface | USB | Full speed 12MHz bps |
| | RS232 | 19200 / 9600 baud rate non-PnP / PnP mode |
| Touch Screen Controller | PenMount 6000 controller IC | |
| Resolution | 2048X2048 | |
| Size | 62.0 x 33.0 mm, two 3.5 φ screw holes | |
| Cursor accuracy | < 1% (Active Area Diagonal of touch screen with PenMount Advanced calibration utility support) | |
| Diagnostic | LED on board | |
| Resistance range | 50 ~ 1.3K ohm | |
| Operating Voltage | +5V DC for USB +5V~12V DC for RS232 (+5~12V for 4/8-wire; +5V only for 5-wire) | |
| Electro Static Discharge (ESD) | Air Discharge 15KV Contact Discharge 8KV | |
| Storage Temperature | -40 °C ~ 85 °C | |
| Operating Temperature | -20 °C ~ 70 °C | |
| Power Consumption | Standby Mode : 15.4 mA ; Active Mode : 24.2 mA (VCC=+5V, Top sheet Panel Resistance: 365 ohm ; Bottom sheet Panel Resistance: 660 ohm) Note. Actual current will be different by touch panel's resistance. | |

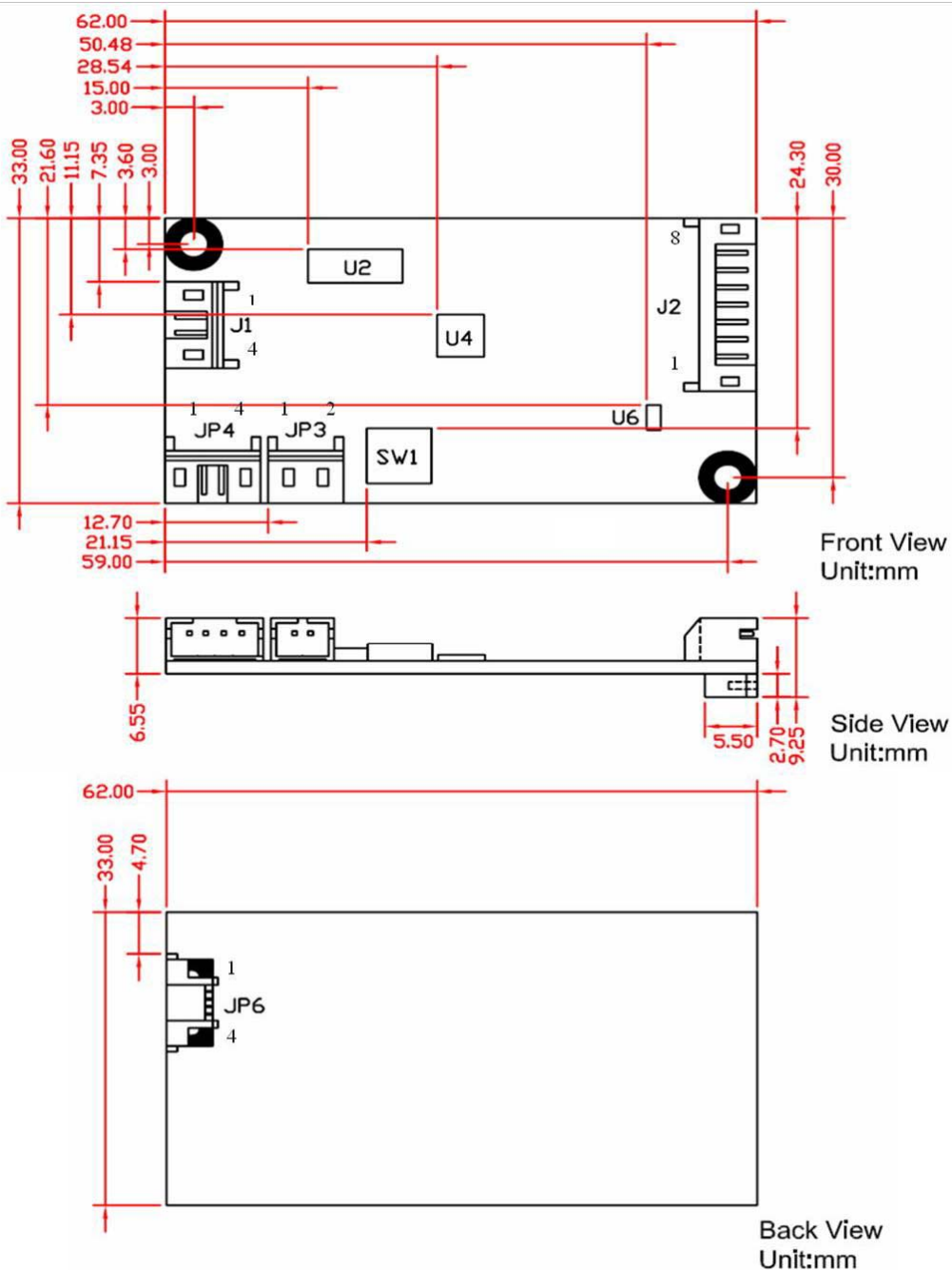
PenMount 6200C Control Board Data Sheet

Driver Software

RS232 interface : DOS, Windows 2000/ XP/ XPE/ 2003/ 2008/ Vista/ 7, WinCE 4.2/ 5.0/ 6.0, Linux (Kernel 2.6 and X-Window mode), QNX 6.2/ 6.3/ 6.4/ 6.5

USB interface : Windows 2000/ XP/ XPE/ 2003/ 2008/ Vista/ 7, WinCE 4.2/ 5.0/ 6.0, Linux OS (Kernel 2.6 and X-Window mode), QNX 6.2/ 6.3/ 6.4/ 6.5 (Inbox support)

Mechanical :



PenMount 6200C Control Board Data Sheet

Connector Definition:

J1: Connect to USB:

Pin 1: VCC
Pin 2: D-
Pin 3: D+
Pin 4: GND

JP4 : Connect to RS232:

Pin 1: Ground
Pin 2: TXD
Pin 3: RXD
Pin 4: RTS

JP3 : Power Connector for RS232

Pin1: +5~12V DC input
Pin2: Ground

SW1:

| | ON | OFF |
|---|----------------|------------------|
| 1 | *4,8 wire | 5 wire |
| 2 | *PNP mode | Non-PNP mode |
| 3 | 9600 baud rate | *19200 baud rate |
| 4 | *Reserved | Reserved |

* Default

J2: Connect to 4/5/8 wire Touch Screen:

| | 8 wire | 4 wire | 5 wire |
|-------|--------------|--------|--------|
| PIN 1 | Top | Top | UL (Y) |
| PIN 2 | Top Sense | N/A | Sense |
| PIN 3 | Bottom Sense | N/A | N/A |
| PIN 4 | Bottom | Bottom | UR (H) |
| PIN 5 | Left | Left | LL (L) |
| PIN 6 | Left Sense | N/A | N/A |
| PIN 7 | Right Sense | N/A | N/A |
| PIN 8 | Right | Right | LR (X) |

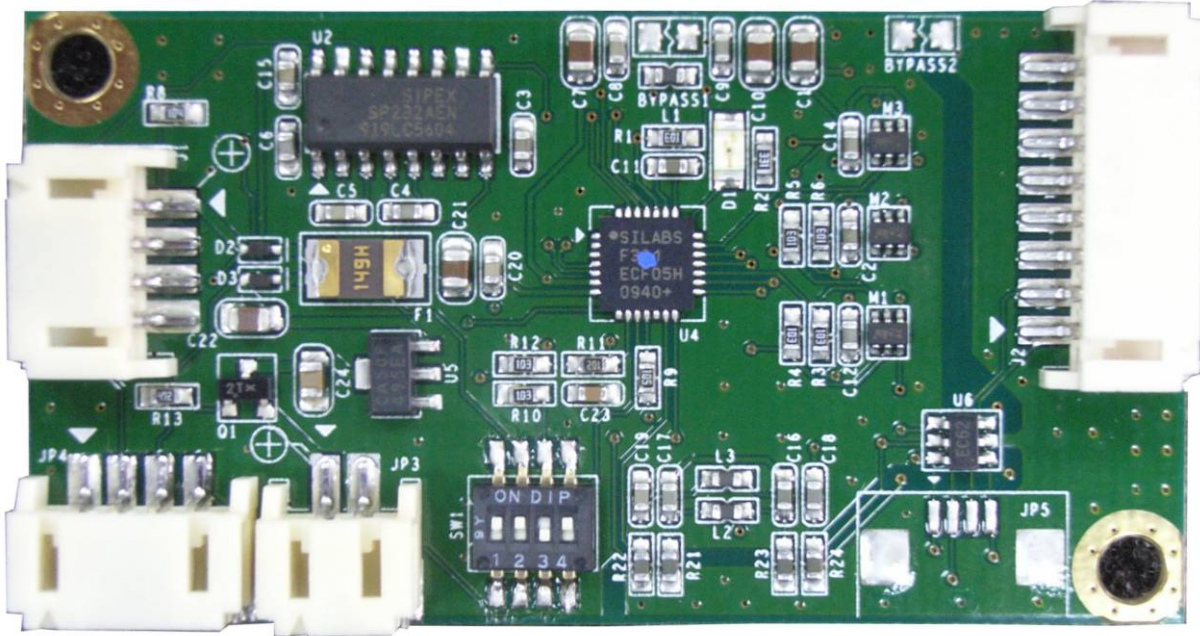
JP6: Connect to 4-wire FPC connector (ZIF tail, Pitch : 1.0 mm)

Pin 1: Bottom
Pin 2: Left
Pin 3: Top
Pin 4: Right

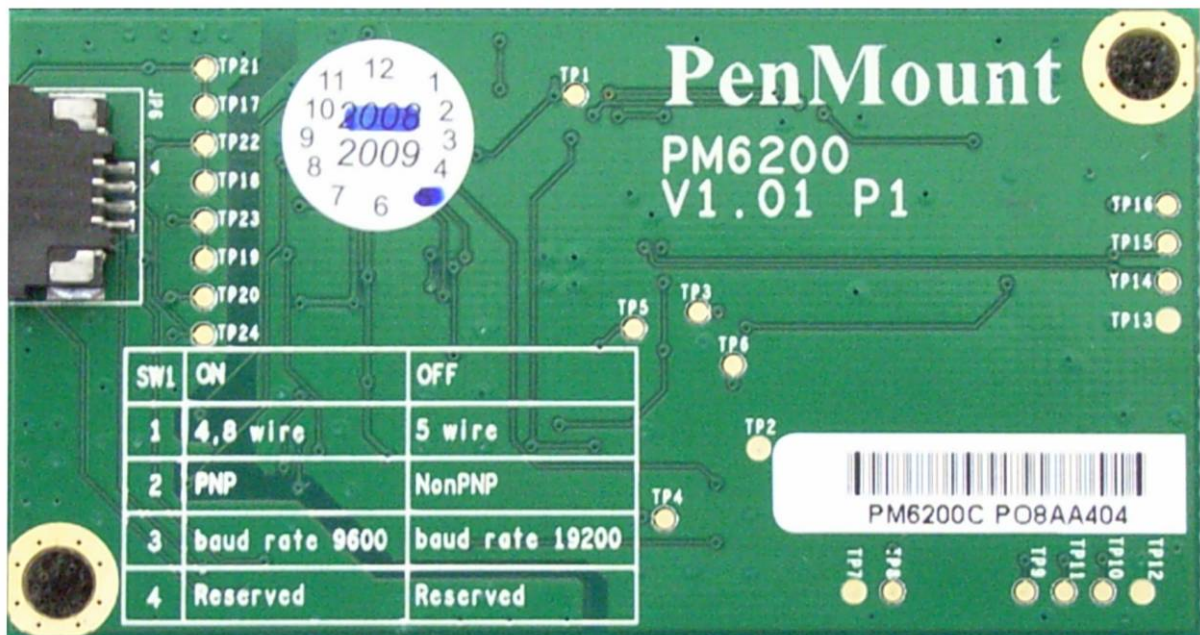
PenMount 6200C Control Board Data Sheet

Picture of PM6200C Control Board:

Top View



Bottom View



PenMount 6200C Control Board Data Sheet

Ordering Information:

| Connector Part No | J1 | J2 | JP3 | JP4 | JP5 | JP6 |
|----------------------|----|----|-----|-----|-----|-----|
| PM6200A | ● | ● | ● | ● | ● | |
| PM6200C | ● | ● | ● | ● | | ● |